



Safe Locks & Components

Integrated solutions for high security safes,
bank vault doors and bank deposit boxes systems.

2019
REV.C

Kcolefas

About Kcolefas

Kcolefas is a leading supplier of security products, solutions and services, focusing on security lock system and financial equipment offerings. With deep expertise in security industry, we strive to deliver best practical solutions and security experience.

We offer U.L. listed safe locks and comprehensive safe lock solutions at a cost-effective price, helping build your safe storage products in a more secure way.

Our safe lock offerings now include mechanical combination locks, electronic combination locks, key operated locks, safe deposit locks and safe components.

We strive to provide best tailored safe lock solutions to customers, boosting your security to a higher level. Connect with us and experience how we can help your business.

Table of Contents

Mechanical Combination Locks	4-12
Electronic Combination Locks	13-40
Key Locks	41-49
Safe Deposit Locks	50-58
Safe Components	59-67

Safe lock Series



Mechanical Combination Safe Lock Series

The mechanical combination lock has always been the representative in safe lock industry for its most robust, reliable and consistent characteristics.

Kcolefas offers U.L group 2 certificated 3 wheel combination locks with an array of dials and rings in classical and universal styles. Our mechanical combination safe locks will do a great job guarding your valuables as always in almost every application.

Dial&Ring

30100



Features

Dial&Ring

- Front reading dial
- External diameter 95 mm
- Die-cast with satin chrome finish

Spindle

- Diameter 8mm
- Projecting approx. 102 mm (4")
- Usable length: approx. 79 mm for 3 wheel lock 30180
- Brass spindle

Compatible with

- 3 wheel combination lock 30180

Options

Key locking on dial

- Can be ordered with key locking system on dial (2 keys)

Color&Finish

- Satin chrome – 30100

Dial&Ring

30101



Features

Dial&Ring

- Front reading dial
- External diameter 95 mm
- Die-cast with satin chrome finish

Spindle

- Thread UNS 5/16"-40, die-cast
- Projecting 102 mm (4")
- Usable length: 79 mm for 3 wheel lock 30181
- Dial splined on 43
- Steel spindle

Compatible with

- 3 wheel combination lock 30181

Options

Key locking on dial

- Can be ordered with key locking system on dial (2 keys)

Color&Finish

- Satin chrome – 30101.0
- Black & White – 30101.1



30101.1



30101.0.1

Dial&Ring

30130



Features

Dial&Ring

- Top reading dial
- External diameter 96 mm
- Die-cast with satin chrome finish

Spindle

- Diameter 8mm
- Projecting approx. 102 mm (4")
- Usable length: approx. 79 mm for 3 wheel lock 30180
- Brass spindle

Compatible with

- 3 wheel combination lock 30180

Options

Color&Finish

- Satin chrome – 30130

Dial&Ring

30131



Features

Dial&Ring

- Top reading dial
- External diameter 96 mm
- Die-cast with satin chrome finish

Spindle

- Diameter 8mm
- Projecting approx. 102 mm (4")
- Usable length: approx. 79 mm for 3 wheel lock 30180
- Brass spindle

Compatible with

- 3 wheel combination lock 30180

Options

Key locking on dial

- Can be ordered with key locking system on dial (2 keys)

Color&Finish

- Satin chrome – 30131.0
- Black & White – 30131.1



30131.1

Dial&Ring

30132



Features

Dial&Ring

- Top reading dial
- External diameter 96 mm
- Die-cast with satin chrome finish

Spindle

- Thread UNS 5/16"-40, die-cast
- Projecting 102 mm (4")
- Usable length: 79 mm for 3 wheel lock 30181
- Dial splined on 43
- Steel spindle

Compatible with

- 3 wheel combination lock 30181

Options

Key locking on dial

- Can be ordered with key locking system on dial (2 keys)

Color&Finish

- Satin chrome – 30132.0
- Black & white – 30132.1
- Bright chrome – 30132.2
- Bright black chrome – 30132.3
- Bright brass – 30132.4



30132.1



30132.2



30132.3



30132.4



30132.0.1

Dial&Ring

30133



Features

Dial&Ring

- Top reading dial
- External diameter 74 mm
- Die-cast with satin chrome finish

Spindle

- Thread UNS 5/16"-40, die-cast
- Projecting 102 mm (4")
- Usable length: 79 mm for 3 wheel lock 30181
- Dial splined on 43
- Steel spindle

Compatible with

- 3 wheel combination lock 30181

Options

Key locking on dial

- Can be ordered with key locking system on dial (2 keys)

Color&Finish

- Satin chrome – 30133.0
- Black & White – 30133.1



30133.1



30133.0.1

3-Wheel Lock

30180



Features

Specification

- 3 wheel combination lock
- Standard footprint
- Integrated relocker: bolt blocking in case of manipulation of the lock cover
- Die-cast lock case, bolt and drop lever
- Bolt throw: 9.2mm
- Accessory pack: change key, spline key, 2 screws 1/4 - 20 x 3/8 PH, 2 screws 1/4 - 20 x 1 PH
- Four-way mounting: left hand, right hand, vertical up, vertical down

Certification

- U.L. Group 2

Compatible with

- Dial&Ring 30100, 30130, 30131

Options

Color&Finish

- Color zinc - 30180
- Black finish - 30180.1



30180.1

3-Wheel Lock

30181



Features

Specification

- 3 wheel combination lock
- Standard footprint
- Integrated relocker: bolt blocking in case of manipulation of the lock cover
- Die-cast lock case and bolt
- Bolt throw: 8.7mm
- Accessory pack: change key, spline key, 2 screws 1/4 - 20 x 3/8 PH, 2 screws 1/4 - 20 x 1 PH
- Four-way mounting: left hand, right hand, vertical up, vertical down

Certification

- U.L. Group 2

Compatible with

- Dial&Ring 30101, 30132, 30133

Options

Bolt

- Bolt with 2 M4 threads

Accessory pack

Accessory pack screws:

- Metric system:
 - 2 Screw M6 x 10 mm
 - 2 Screw M6 x 25 mm
- Imperial system:
 - 2 screws 1/4 - 20 x 3/8 PH
 - 2 screws 1/4 - 20 x 1 PH

Safe lock
Series



Electronic Combination Safe Lock Series

Kcolefas' diverse electronic combination lock product portfolio provides solutions for security containers, safe boxes, banks and other commercial industries.

We offer both non-certificated basic locks at economical cost and certificated high-grade locks which are fully qualified for banks, ATMs, vaults, high-end safes and other circumstances which requires advanced security protection.

Entry

30200



Features

Function

- 1 user or 3 users
- Low voltage signal
- Wrong try penalty after 4 false codes

Specification

- Die-cast entry case
- Cable connected, no spindle required
- Power supply: integrated 1*9V block battery compartment inside entry case

Compatible with

- Swing bolt lock 30280

Options

User

- 1 user code
- 3 user codes

Color&Finish

- Satin chrome – 30200
- Bright gold – 30200.1



30200.1

Entry

30201



Features

Function

- 5 users and 1 manager
- Low voltage signal
- Wrong try penalty after 4 false codes
- Dual mode
- Time delay 00-59 minutes

Specification

- Die-cast entry case
- Cable connected, no spindle required
- Power supply: integrated 1*9V block battery compartment inside entry case

Compatible with

- Swing bolt lock 30280

Options

Override key system

- Lever key override system on lock

Color&Finish

- Satin chrome – 30201

Entry

30202



Features

Function

- 2 users
- Low voltage signal
- Wrong try penalty after 3 false codes

Specification

- Die-cast entry case
- Cable connected, no spindle required
- Power supply: integrated 1*9V block battery compartment inside entry case

Compatible with

- Solenoid lock set

Options

Color&Finish

- Satin chrome – 30202

Entry

30203



Features

Function

- 1 user
- Low voltage signal
- Wrong try penalty after 3 false codes

Specification

- ABS entry case
- Cable connected, no spindle required
- Power supply: integrated 4*1.5V AA battery compartment inside entry case

Compatible with

- Dead bolt lock 30286

Options

Color&Finish

- ABS black – 30203

Entry

30204



Features

Function

- 1 user and 1 manager (reset code)
- Low voltage signal
- Wrong try penalty after 4 false codes

Specification

- Die-cast entry case
- Cable connected, no spindle required
- Power supply: integrated 1*9V block battery compartment inside entry case

Compatible with

- Swing bolt lock 30290

Options

Color&Finish

- Satin chrome – 30204

Entry

30205



Features

Specification

- ABS entry case
- Cable or spindle connected available
- Power supply: 1*9V block battery box required

Compatible with

- Swing bolt lock 30291
- Dead bolt lock 30292
- Dead bolt lock 30293

Options

Color&Finish

- ABS entry case- 30205

Entry

30206



Features

Specification

- Die-cast entry case
- Cable or spindle connected available
- Power supply: 1*9V block battery box required
- Integrated emergency power supply

Compatible with

- Swing bolt lock 30291
- Dead bolt lock 30292
- Dead bolt lock 30293

Options

Color&Finish

- Black – 30206

Entry

30207



Features

Specification

- Die-cast or ABS entry case
- Cable or spindle connected available
- Power supply: 1*9V block battery box required

Compatible with

- Swing bolt lock 30291
- Dead bolt lock 30292
- Dead bolt lock 30293

Options

Color&Finish

- ABS entry case- 30207.0
- Die-cast entry case- 30207.1

Entry

30208



Features

Specification

- ABS entry case
- Cable or spindle connected available
- Power supply: 1*9V block battery box required
- Auxiliary red light on top

Compatible with

- Swing bolt lock 30291
- Dead bolt lock 30292
- Dead bolt lock 30293

Options

Color&Finish

- ABS entry case – 30208

Entry

30209



Features

Specification

- Die-cast case
- Cable connected, no spindle required
- Power supply: integrated 1*9V block battery compartment inside entry case

Compatible with

- Swing bolt lock 30294

Options

Color&Finish

- Silver – 30209
- Black – 30209.1

Entry

30210



Features

Function

- 5 users, 1 manager, 1 master and 1 override code
- Low voltage signal
- Wrong try penalty after 3 false codes
- Dual mode
- Time delay 01-59 minutes

Specification

- Die-cast entry case
- Cable connected, no spindle required
- Power supply: integrated 4*1.5V AA battery compartment inside entry case

Compatible with

- Swing bolt lock 30287

Options

Color&Finish

- Brush finish– 30210

Entry

30230



Features

Function

- 1 user or 1 manager
- Low voltage signal
- Wrong try penalty after 4 false codes
- Spy proof function while you input the codes
- Date&time display

Specification

- Die-cast entry case
- Cable connected, no spindle required
- Power supply: integrated 4*1.5V AAA battery compartment inside entry case

Compatible with

- Swing bolt lock 30280
- Dead bolt lock 30281

Options

Color&Finish

- Satin chrome – 30230

Entry

30231



Features

Function

- 2 users and 1 manager
- Low voltage signal
- Wrong try penalty after 5 false codes
- Spy proof function while you input the codes

Specification

- ABS entry case
- Cable connected, no spindle required
- Power supply: integrated 4*1.5V AA battery compartment inside entry case

Compatible with

- Swing bolt lock 30285

Options

Color&Finish

- ABS silver – 30231

Entry

30270



Features

Function

- 1 user and 32 fingerprints
- Low voltage signal

Specification

- Die-cast entry case
- Cable connected, no spindle required
- Power supply: integrated 1*9V block battery compartment inside entry case

Compatible with

- Swing bolt lock 30280

Options

Color&Finish

- Satin chrome – 30270
- Bright gold – 30270.1



30270.1

Entry

30271



Features

Function

- 1 user and 32 fingerprints
- Low voltage signal
- Wrong try penalty after 5 false codes or fingerprints

Specification

- Die-cast entry case
- Cable connected, no spindle required
- Power supply: integrated 1*9V block battery compartment inside entry case

Compatible with

- Swing bolt lock 30290

Options

Color&Finish

- Satin chrome – 30271

Entry

30272



Features

Function

- 40 user access (code or fingerprint) and 10 manager access (code or fingerprint)
- Low voltage signal
- Wrong try penalty after 3 false codes or 5 false fingerprints
- Dual mode (code and code/code and fingerprint/fingerprint and fingerprint)
- Time delay 01-99 minutes

Specification

- Die-cast entry case
- Cable connected, no spindle required
- Power supply: integrated 4*1.5V AA battery compartment inside entry case

Compatible with

- Swing bolt lock 30287

Options

Color&Finish

- Brush finish– 30272

Entry

30273



Features

Function

- 1 manager code, 1 override code and 30 fingerprints
- Low voltage signal
- Opening mode: code, fingerprint, code and fingerprint

Specification

- Die-cast entry case
- Cable connected, no spindle required
- Power supply: integrated 4*1.5V AA battery compartment inside entry case

Compatible with

- Swing bolt lock 30287

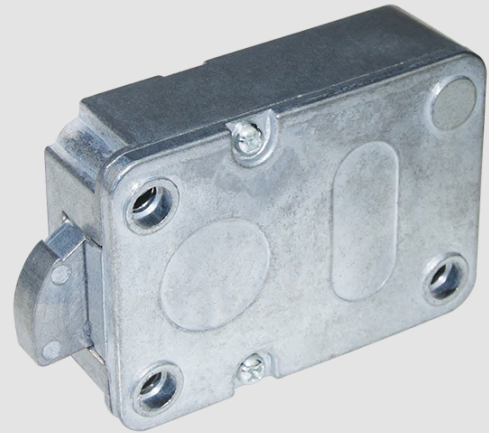
Options

Color&Finish

- Brush finish– 30273

Swing Bolt Lock

30280



Features

Specification

- Die-cast lock case and bolt
- Solenoid driven lock
- Cable connected to entry, no spindle required

Compatible with

- 30280.0/30280.1 is compatible with entry 30200, 30201, 30230, 30270
- 30280.2 override lock is compatible with entry 30201
- 30280.3 override lock is compatible with entry 30270

Options

Override key system

- Can be ordered with override key system on lock, to override the lock directly without correct codes

Color&Finish

- Black finish - 30280.1
- Override key - 30280.2/30280.3



30280.1



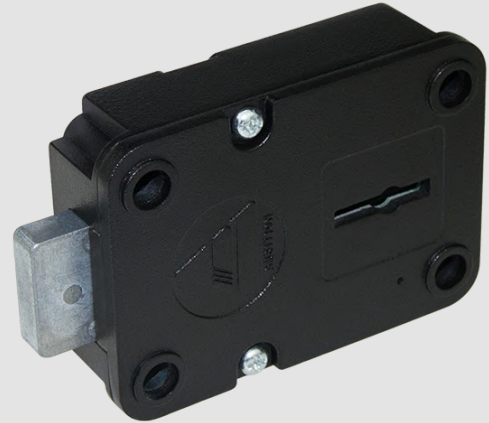
30280.2



30280.3

Dead Bolt Lock

30281



Features

Specification

- Die-cast lock case and bolt
- Motor driven lock, auto-retract bolt
- Cable connected to entry, no spindle required

Compatible with

- Entry 30230

Options

Override key system

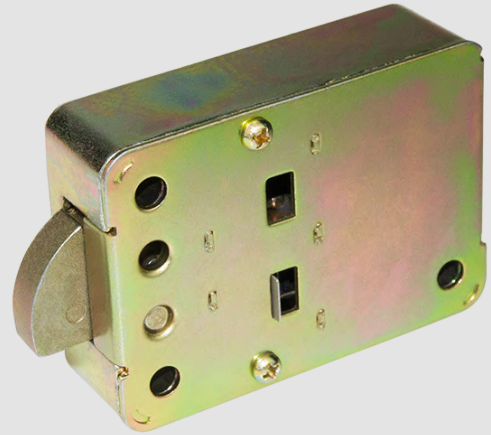
- Can be ordered with override key system on lock, to override the lock directly without correct codes

Color&Finish

- Black finish - 30281

Swing Bolt Lock

30285



Features

Specification

- Die-cast lock case and bolt
- Solenoid driven lock
- Cable connected to entry, no spindle required
- Override solenoid lock design on lock

Compatible with

- Entry 30231

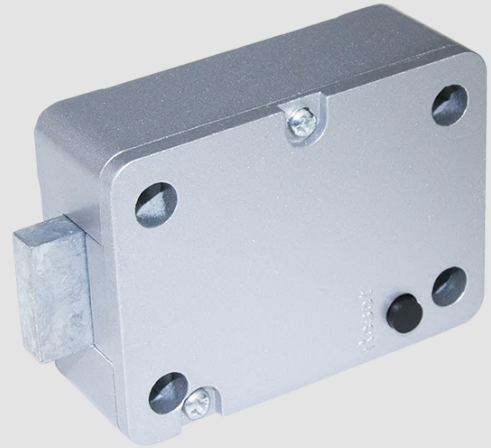
Options

Color&Finish

- Color zinc - 30285

Dead Bolt Lock

30286



Features

Specification

- Die-cast lock case and bolt
- Motor driven lock, auto-retract bolt
- Cable connected to entry, no spindle required

Compatible with

- Entry 30203

Options

Color&Finish

- Silver color - 30286

Swing Bolt Lock

30287



Features

Specification

- Die-cast lock case and bolt
- Solenoid driven lock
- Cable connected to entry, no spindle required

Compatible with

- Entry 30210
- Entry 30272
- Entry 30273

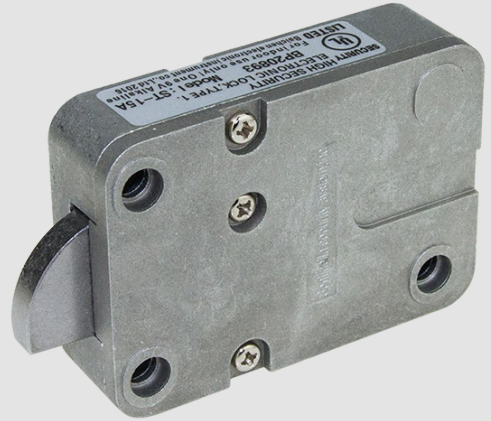
Options

Lock type

- Black finish - 30287

Swing Bolt Lock

30290



Features

Specification

- Die-cast lock case and bolt
- Motor driven lock
- Cable connected to entry, no spindle required

Certification

- U.L. Group 2 (30204+30290.0)

Compatible with

- Entry 30204
- Entry 30271

Options

Lock type

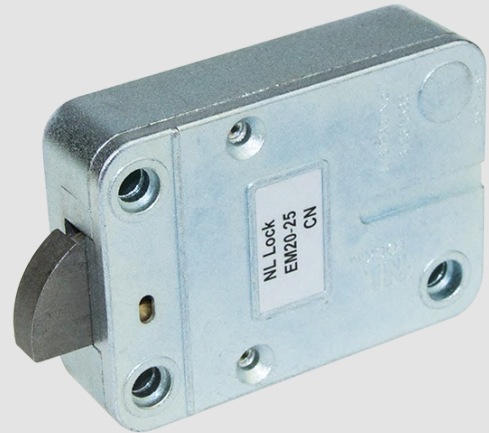
- Default lock - 30290.0
- Small lock - 20290.1



30290.1

Swing Bolt Lock

30291



Features

Function

- 1 user and 1 manager
- Time delay mode

Specification

- Swing bolt also known as RotoBolt
- Die-cast lock case and bolt
- Motor driven lock
- Cable connected to entry, no spindle required

Certification

- U.L. listed Type 1

Compatible with

- Entry 30205
- Entry 30206
- Entry 30207
- Entry 30208

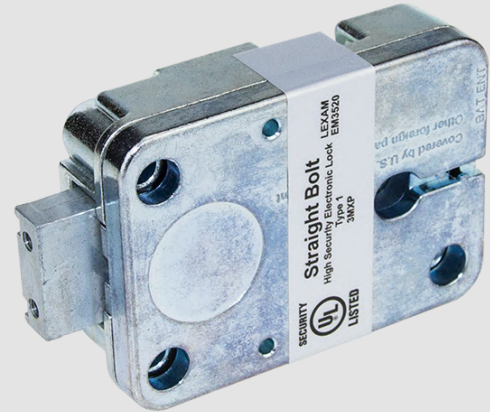
Options

Lock type

- 1 manger and 1 user, time delay mode - 30291.0
- 1 manger and 9 user, time delay mode, silent alarm, dual mode - 30291.1

Dead Bolt Lock

30292



Features

Function

- 1 user and 1 manager
- Time delay mode

Specification

- Dead bolt also known as StraightBolt
- Die-cast lock case and bolt
- Motor driven lock
- Spindle required to connect to entry

Certification

- U.L. listed Type 1

Compatible with

- Entry 30205
- Entry 30206
- Entry 30207
- Entry 30208

Options

Lock type

- 1 manger and 1 user, time delay mode - 30292.0
- 1 manger and 9 user, time delay mode, silent alarm, dual mode - 30292.1

Dead Bolt Lock

30293



Features

Function

- 1 user and 1 manager
- Time delay mode

Specification

- Dead bolt also known as MotorLock
- Die-cast lock case and bolt
- Motor driven lock, auto retract bolt
- Cable connected to entry, no spindle required

Compatible with

- Entry 30205
- Entry 30206
- Entry 30207
- Entry 30208

Options

Lock type

- 1 manger and 1 user, time delay mode - 30293.0
- 1 manger and 9 user, time delay mode, silent alarm, dual mode - 30293.1

Swing Bolt Lock

30294



Features

Specification

- Die-cast lock case and bolt
- Motor driven lock
- Cable connected to entry, no spindle required

Certification

- U.L. Group 2

Compatible with

- Entry 30209

Options

Lock type

- 1 manger and 1 user, time delay mode - 30294.0
- 1 manger and 9 user, time delay mode, silent alarm, dual mode - 30294.1

Safe lock Series



Mechanical Key Lock Series

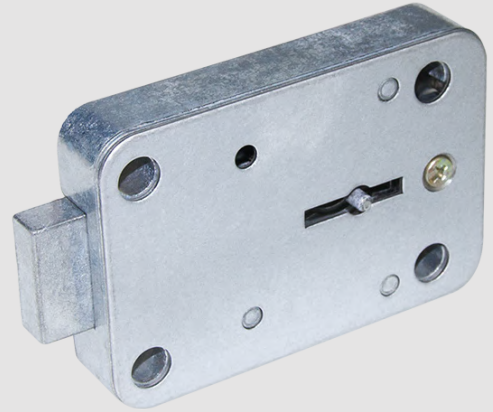
Key operated lock represents a unique and irreplaceable access and has been widely used since the very first day throughout safe industry.

Kcolefas offers classical and durable double bitted lever key locks with a variety of key lengths. Our 4 wheel certificated key locks provides additional convenience by its easy key changing and foldable key design.

Our key locks are standard footprint and can be replaced with other standard combination locks easily with the same mounting dimension.

Key Lock

30300



Features

Specification

- 8 lever right hand lock
- Standard footprint
- Key retained in open position
- Die-cast lock case, bolt and key
- Bolt throw 12 mm
- Bolt extension to the back

Options

Function

- Keyed-alike

Keys

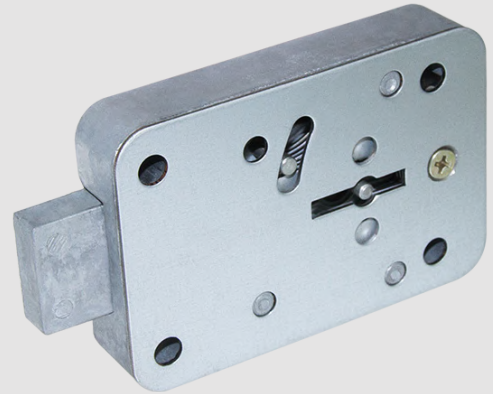
- Full length: 89mm
usable length: 53mm - 30300.1



30300.1

Key Lock

30301



Features

Specification

- 8 lever right hand lock
- Standard footprint
- Key retained in open position
- Die-cast lock case, bolt and key
- Bolt throw 12 mm
- Bolt extension to the back
- Serial number marked on key

Options

Function

- Keyed-alike
- Key not retained in open position

Keys

- Full length: 75mm (3")
usable length: 35mm - 30301.1
- Full length: 147mm (6")
usable length: 97mm - 30301.2



30301.1



30301.2

Key Lock

30302



Features

Specification

- 8 lever right hand lock
- Standard footprint
- Key retained in open position
- Die-cast lock case, bolt and key
- Bolt throw 12 mm
- Serial number marked on key

Options

Function

- Keyed-alike
- Key not retained in open position
- No Serial number marked on key

Keys

- Full length: 78mm (3")
usable length: 35mm - 30302.1
- Full length: 120mm
usable length: 71mm - 30302.2
- Full length: 160mm
usable length: 117mm - 30302.3



30302.1



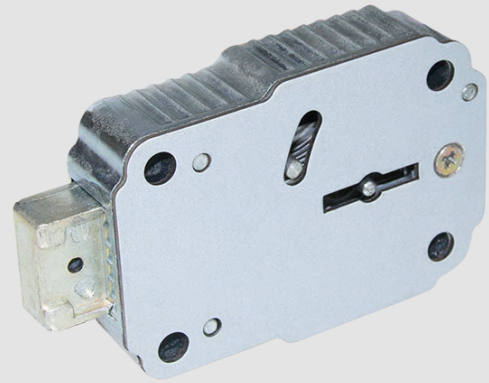
30302.2



30302.3

Key Lock

30303



Features

Specification

- 8 lever right hand lock
- Standard footprint
- Key retained in open position
- Die-cast lock case, bolt and key
- Bolt throw 12 mm
- Prepared for bolt extension to the front
- Bolt extension to the back
- Serial number marked on key

Options

Function

- Keyed-alike

Keys

- Full length: 75mm (3")
usable length: 35mm - 30303.1
- Full length: 147mm (6")
usable length: 97mm - 30303.2



30303.1



30303.2

Key Lock

30304



Features

Specification

- 8 lever right hand lock
- Standard footprint
- Key retained in open position
- Die-cast lock case, bolt and key
- Bolt throw 12 mm
- Serial number marked on key

Options

Function

- Keyed-alike
- Key not retained in open position
- No Serial number marked on key

Keys

- Full length: 78mm (3")
usable length: 38mm - 30304.1



30304.1

Key Lock

30305



Features

Specification

- 11 lever right hand lock
- Standard footprint
- Key retained in open position
- Steel case and bolt, robust and reliable
- Anti-drill protection
- Bolt throw 12 mm
- Serial number marked on key

Certification

- China G.A. approval

Options

Function

- Keyed-alike
- No Serial number marked on key

Keys

- Full length: 100mm
usable length: 50mm - 30305.1
- Full length: 135mm
usable length: 85mm - 30305.2
- Full length: 175mm
usable length: 125mm - 30305.3
- Full length: 235mm
usable length: 185mm - 30305.4



30305.1



30305.2



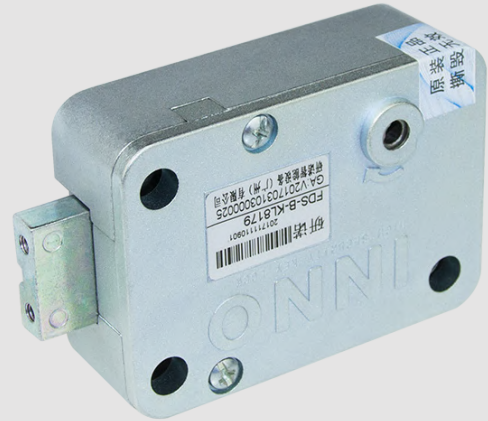
30305.3



30305.4

Key Lock

30390



Features

Specification

- 4 wheel changeable key lock
- 4 brass wheels
- Standard footprint
- Key retained in open position
- Die-cast lock case and bolt
- Stainless steel key
- Bolt throw 10 mm
- Four-way mounting: left hand, right hand, vertical up, vertical down

Certification

- China G.A. approval

Options

Function

- Foldable key

Keys

- Full length: 121mm (3" key stem)
usable length: 53mm - 30390.1
- Full length: 148mm (4" key stem)
usable length: 80mm - 30390.2
- Full length: 168mm (5" key stem)
usable length: 100mm - 30390.3



30390.1



30390.2



30390.3

Key Lock

30391



Features

Specification

- 4 wheel changeable key lock
- 4 brass wheels
- Standard footprint
- Key retained in open position
- Die-cast lock case and bolt
- Stainless steel key
- Bolt throw 10 mm
- Four-way mounting: left hand, right hand, vertical up, vertical down

Certification

- Germany VdS approval, EN 1300, Class B

Options

Function

- Foldable key

Keys

- Full length: 121mm (3" key stem)
usable length: 53mm - 30391.1
- Full length: 148mm (4" key stem)
usable length: 80mm - 30391.2
- Full length: 168mm (5" key stem)
usable length: 100mm - 30391.3



30391.1



30391.2



30391.3

Safe lock Series



Safe Deposit Lock

Series

The safe deposit locks are primarily used on safe deposit boxes in banks.

Our locks are designed with same footprint as classical and active safe deposit locks in market so as to offer precise solutions to every market worldwide.

In the meantime, Kcolefas pays attention and take care of the aftermarket with replacement locks which shares the same footprint.

Safe Deposit Lock

30400



Features

Specification

- Available for right-hand (R.H.) and left-hand (L.H.)
- 1/2 inch height for standard safe deposit door thickness
- Brass levers and plugs for long life
- Keys retained when in open position

Mounting dimension

- 68*32mm
- Same footprint as S&G 4440 group for easy retrofitting

Special order

- For big/small nose, single/double nose and other special request orders please contact our sales team for more details.

Options

Color&Finish

- Left-hand (L.H.) – 30400
- Right-hand (R.H.) – 30400.1



30400.1

Key



Guard key



Renter key

Safe Deposit Lock

30401



Features

Specification

- Available for right-hand (R.H.) and left-hand (L.H.)
- 1/2 inch height for standard safe deposit door thickness
- Brass levers and plugs for long life
- Keys retained when in open position

Mounting dimension

- 71*38mm
- Same footprint as Diebold 175-05 group for easy retrofitting

Special order

- For big/small nose, single/double nose and other special request orders please contact our sales team for more details.

Options

Color&Finish

- Left-hand (L.H.) – 30401
- Right-hand (R.H.) – 30401.1



30401.1

Key



Guard key



Renter key

Safe Deposit Lock

30402



Features

Specification

- Changeable key deposit lock
- Available for right-hand (R.H.) and left-hand (L.H.)
- 1/2 inch height for standard safe deposit door thickness
- Brass levers and plugs for long life
- Keys retained when in open position

Mounting dimension

- 71*38mm
- Same footprint as Diebold 175-70 group for easy retrofitting

Special order

- For big/small nose, single/double nose and other special request orders please contact our sales team for more details.

Options

Color&Finish

- Left-hand (L.H.) – 30402
- Right-hand (R.H.) – 30402.1



30402.1

Key



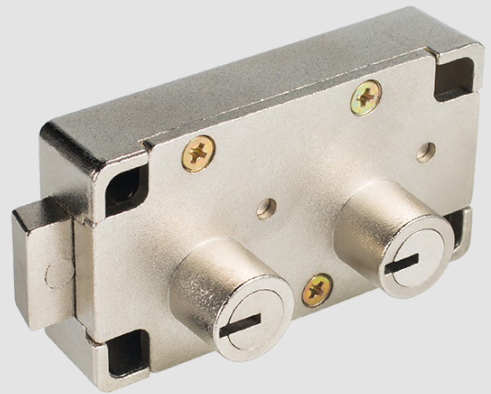
Guard key



Renter key

Safe Deposit Lock

30403



Features

Specification

- Available for right-hand (R.H.) and left-hand (L.H.)
- 1/2 inch height for standard safe deposit door thickness
- Brass levers and plugs for long life
- Keys retained when in open position

Mounting dimension

- 68*32mm
- Same footprint as S&G 4440 group for easy retrofiting

Special order

- For big/small nose, single/double nose and other special request orders please contact our sales team for more details.

Options

Color&Finish

- Left-hand (L.H.) – 30403
- Right-hand (R.H.) – 30403.1

Key



Guard key

Renter key

Safe Deposit Lock

30420



Features

Specification

- Non-handed design for both right-hand and left-hand doors
- 1/2 inch height for standard safe deposit door thickness
- Brass levers and plugs for long life
- Keys retained when in open position

Mounting dimension

- 76*26 mm
- Same footprint as Mosler 5700 group for easy retrofitting

Special order

- For big/small nose, single/double nose and other special request orders please contact our sales team for more details.

Options

Color&Finish

- Nickle plated – 30420
- Brass finish – 30420.1



30420.1

Key



Guard key



Renter key

Safe Deposit Lock

30421



Features

Specification

- Non-handed design for both right-hand and left-hand doors
- 1/2 inch height for standard safe deposit door thickness
- Brass levers and plugs for long life
- Keys retained when in open position

Mounting dimension

- 80*35 mm

Certification

- U.L. certification

Special order

- For big/small nose, single/double nose and other special request orders please contact our sales team for more details.

Options

Color&Finish

- Nickle plated – 30421

Key



Guard key

Renter key

Safe Deposit Lock

30430



Features

Specification

- Changeable key deposit lock
- Non-handed design for both right-hand and left-hand doors
- 3/8 or 1/2 inch height for standard safe deposit door thickness
- Brass levers and plugs for long life
- Keys retained when in open position
- Special key design available

Mounting dimension

- 89*37 mm
- Same footprint as S&G 4500 group for easy retrofitting

Certification

- U.L. certification

Special order

- For big/small nose, single/double nose and other special request orders please contact our sales team for more details.

Options

Color&Finish

- Nickle plated – 30430
- Brass finish – 30430.1
- Nickle plated with grooved key – 30430.0.1



30430.0.1



Guard key



Renter key

Key



Guard key



Renter key

Safe Deposit Lock

30431



Features

Specification

- Available for right-hand (R.H.) and left-hand (L.H.)
- 1/2 inch height for standard safe deposit door thickness
- Brass levers and plugs for long life
- Keys retained when in open position

Mounting dimension

- 68*32mm
- Same footprint as S&G 4440 group for easy retrofitting

Certification

- U.L. certification

Special order

- For big/small nose, single/double nose and other special request orders please

Options

Color&Finish

- Left-hand (L.H.) / Right-hand (R.H.)
- Nickle plated / Brass finish



30431.0.0

Key



Guard key



Renter key

Component
Series



Component Series

We offer an integrated solution to security industry with a variety of components in different parts.

The handles, escutcheons and boltwork are all universal and can apply to many other applications.

Handle

30900



Features

Specification

- Heavy duty metal handle
- Bright chrome, mat chrome, bright gold finish available
- Square shaft

Options



30900.1



30900.2

Handle

30903



Features

Specification

- 3-spoke heavy duty metal handle
- Bright chrome, bright gold, black chrome finish available
- Round shaft

Options



30903.1



30903.2



30903.6



30903.7

Handle

30905



Features

Specification

- 5-spoke heavy duty metal handle
- Bright chrome, bright gold, black chrome finish available
- Round shaft

Options



30905.1



30905.2



30905.6



30905.7

Escutcheon

30910



Features

Specification

- Metal escutcheon
- Vertical and horizontal available
- 30910.2 round hole escutcheon is compatible with key lock 30390 and 30391
- Other escutcheons are compatible with double bitted key locks

Options



30910.1



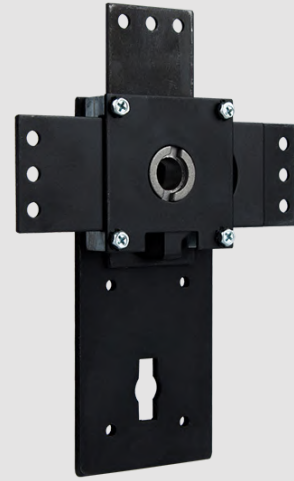
30910.2



30910.9

Boltwork

30980

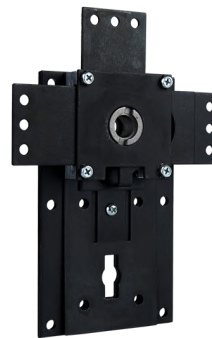


Features

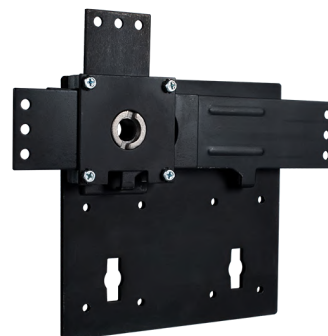
Specification

- 3-sided bolt work for one or two standard safe lock(s)
- Mounted by screws or welding
- 30980.1.1 and 30980.2.1 with relocker plate

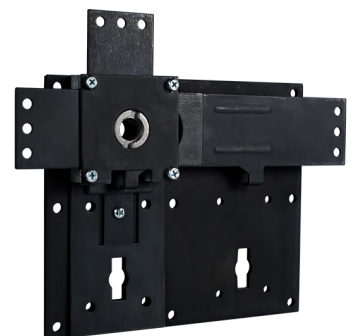
Options



30980.1.1



30980.2



30980.2.1

Boltwork

30981



Features

Specification

- 4-sided bolt work for one standard safe lock
- Mounted by screws or welding

Options

Boltwork

30982



Features

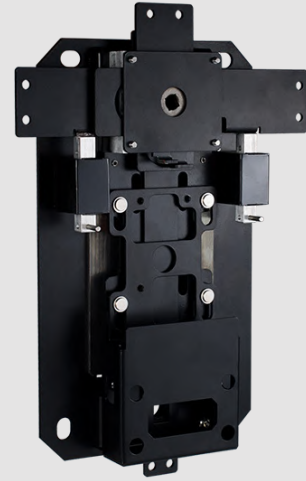
Specification

- 3-sided bolt work for one standard safe lock and one override safe lock.
- Mounted by screws or welding
- Hollowing design especially for lightweight safes

Options

Boltwork

30983



Features

Specification

- 4-sided bolt work for one standard safe lock and one override safe lock
- Mounted by screws or welding
- Torsion restriction design protects the lock from being attacked through handle
- Auto relock when the main lock is damaged
- High strength anti-drill steel plate protects mechanism and safe lock from drilling attack

Options

Kcolefas Limited

Unit D, 16/F,
One Capital Place,
18 Luard Road, Wan Chai,
Hong Kong

Tel: +852 53117473
Email: info@kcolefas.com
Website: www.Kcolefas.com